

# DIESEL KLEEN® + CETANE BOOST®

TECHNICAL BULLETIN 3800



**Diesel Kleen® +Cetane Boost®** is a total injector cleaner and performance improver that cleans injectors, boosts cetane and lubricates fuel injection components. This Max HP Formula restores lost power, smooths rough-running engines and improves fuel economy up to 8%.

## Benefits

Cleans dirty injectors and prevents injector sticking in High Pressure Common Rail (HPCR) and older systems

Removes deposits on injectors and nozzle tips and prevents future deposits

Boosts cetane up to 6 numbers — engines run smoother with less power lag and faster cold starts

Boosts power — reduces need for downshifting

Improves fuel economy up to 8%

Contains **Slickdiesel® Lubricator** to protect fuel pumps and injectors from increased wear caused by Ultra Low Sulfur Diesel (ULSD) fuel

Effective in all diesel fuels, including ULSD, biodiesel and biodiesel blends

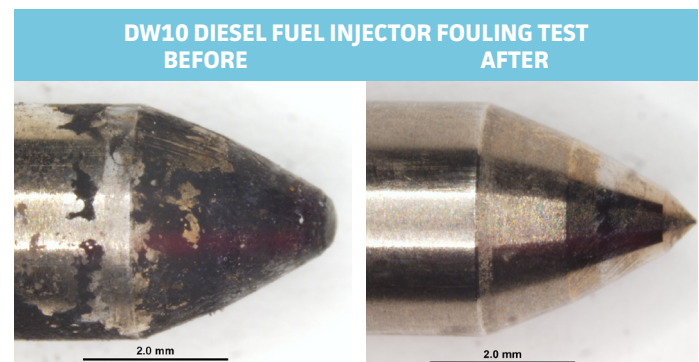
## Boosts Cetane up to 6 Numbers

There is a direct relationship between a diesel fuel's cetane number and its ignition point. Delayed ignition is a primary cause of increased emissions and inferior engine performance. The lower the cetane number, the longer the ignition delay. Fuels with high cetane numbers burn more quickly and more completely, resulting in smoother running engines with less power lag, lower emissions and easier engine starting.

## New Advanced Injector Cleaning Technology

Power Service **Diesel Kleen +Cetane Boost** has been formulated to contain the most advanced injector cleaning technology. This technology provides maximum injector clean-up of injection deposits in all fuel injection systems, including High Pressure Common Rail (HPCR) systems installed on 2007 and newer engines. The engine operational improvements are significant:

- Decreased fuel consumption up to 8% — fuel savings exceed cost of additive
- Increased power and reduced need for downshifting
- Smoother and quieter engine operation



*High Pressure Common Rail injectors before and after clean-up with Diesel Kleen +Cetane Boost diesel fuel.*

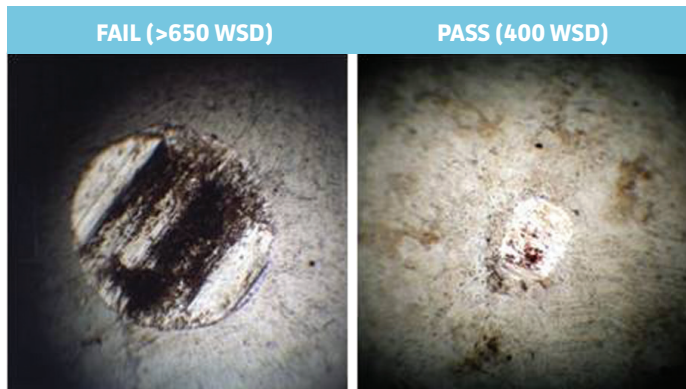
# DIESEL KLEEN® +CETANE BOOST®

TECHNICAL BULLETIN 3800



## Contains Slickdiesel® for Maximum Fuel Lubrication

**Slickdiesel** sets the standard for lubrication of diesel fuel injection systems. The components of diesel fuel injection systems are lubricated by diesel fuel. Without proper lubrication, fuel injectors and pumps are subjected to increased wear rates and premature failure. **Diesel Kleen® +Cetane Boost®** contains **Slickdiesel**, a proprietary Power Service® diesel fuel lubricator that exceeds the ASTM D-975 maximum specification for lubricity in Low and Ultra Low Sulfur Diesel (ULSD) fuels.



High Frequency Reciprocating Rig (HFRR) evaluates the lubricity of diesel fuel. The Wear Scar Diameter (WSD) maximum is 520 microns. A WSD measuring larger than 520 does not meet lubricity specifications.

## TYPICAL PHYSICAL PROPERTIES OF DIESEL KLEEN +CETANE BOOST

Color	Customer Convenience +Cetane Boost Formula (1:400) . . . . .	Straw
	Concentrated +Cetane Boost Formula (1:1,000) . . . . .	Brown
	Concentrated +Cetane Boost Formula (1:1,500) . . . . .	Brown
Density (lbs/gal) . . . . .		7.7
Sulfur Content . . . . .		<15 parts per million (ppm)
Flash Point	Customer Convenience +Cetane Boost Formula (1:400) . . . . .	105°F.
	Concentrated +Cetane Boost Formula (1:1,000) . . . . .	111°F.
	Concentrated +Cetane Boost Formula (1:1,500) . . . . .	142°F.
Solubility	In Diesel Fuel . . . . .	Completely Soluble
	In Biodiesel and Biodiesel Blends . . . . .	Completely Soluble
	In Kerosene . . . . .	Completely Soluble
Shipping and Handling	Part Nos. 3016, 3025, 3080, 3128, 3880, 3850, 3855 . . . . .	Not regulated by DOT
	Part No. 3860 . . . . .	Combustible Liquid N.O.S. NA 1993 (Petroleum Distillates), Marine Pollutant (2-Ethylhexyl Nitrate)

Use of Diesel Kleen +Cetane Boost will not harm oxidation catalysts or diesel particulate filters on 2007 or newer engines.  
This diesel fuel additive complies with the federal low sulfur content requirements for use in diesel motor vehicles and nonroad engines.

## DIRECTIONS FOR USE

Add **Diesel Kleen +Cetane Boost** as directed on the container label. To ensure thorough mixing, add prior to filling tanks with diesel fuel.

PART#	PACK	TREATS
<b>CUSTOMER CONVENIENCE +CETANE BOOST FORMULA – 1:400 TREATMENT RATIO</b>		
3016-09	9/1 16-Ounce	Up to 40 Gallons
3025-12	12/1 32-Ounce	Up to 100 Gallons
3080-06	6/1 80-Ounce	Up to 250 Gallons
<b>CONCENTRATED +CETANE BOOST FORMULA – 1:1,000 TREATMENT RATIO</b>		
3128-04	4/1 One-Gallon	Up to 1,000 Gallons
<b>CONCENTRATED +CETANE BOOST FORMULA – 1:1,500 TREATMENT RATIO</b>		
3850-02	Two/2.5-Gallon	Up to 7,500 Gallons
3855	55-Gallon Drum	Up to 82,500 Gallons
3860	260-Gallon Tote	Up to 390,000 Gallons

