

# DIESEL INJECTOR & DPF FLUSH™

TECHNICAL BULLETIN 3200



**Diesel Injector & DPF Flush™** is a fast-acting, single-tank flush that cleans the entire fuel system including injectors, the diesel particulate filter (DPF), turbo and EGR. Formulated to be used monthly or as needed, this complete fuel system flush removes injector deposits and reduces emissions and soot build-up in the DPF. It decreases the frequency and duration of both active and passive diesel regens and minimizes forced regens that lead to costly downtime.

## Benefits

Flushes entire fuel system in a single tank for rapid clean-up

Removes stubborn injector deposits with a single tank use – including IDIDs and nozzle coking

Balances fuel injector flow rates for optimized combustion – smooths rough running engines

Exclusive **REGENEXTEND™** technology reduces the frequency and duration of regens up to 50%

Cleans DPF and prevents premature clogging

Reduces carbon and soot build-up on turbo, EGR and MAF sensor

Reduces emissions, including NO<sub>x</sub> and black smoke, up to 50%

Improves fuel economy up to 10%

Restores lost power and torque and improves acceleration

Significantly reduces maintenance costs and downtime

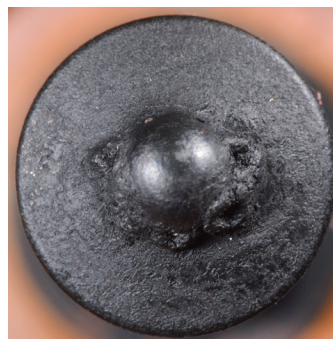
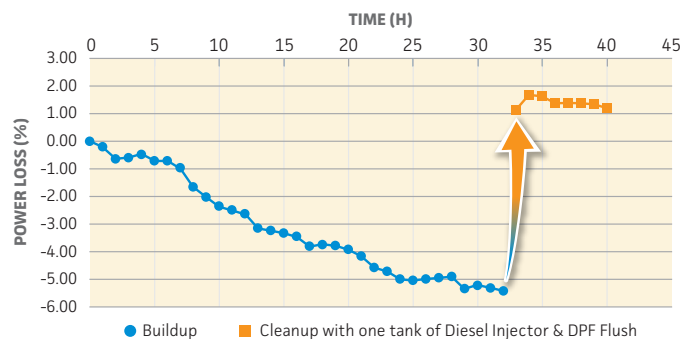
Effective in all diesel fuels, including Ultra Low Sulfur Diesel (ULSD) fuel, biodiesel, biodiesel blends and renewable diesel

Safe for use in all diesel engines – does not contain metal or metal ions

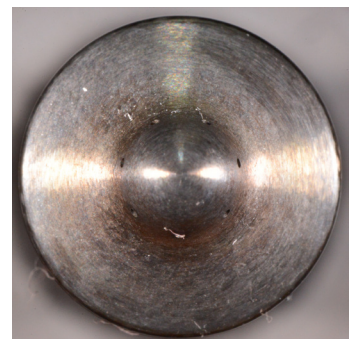
Will not void engine manufacturer's warranty when used as directed

## Rapidly Cleans Injectors in One Tank for Optimized Combustion and Power

Dirty fuel injectors can lead to low combustion efficiency, higher wear and tear, rough running engines, and reduced power and performance. The powerful detergents in Diesel Injector & DPF Flush remove all types of injector deposits, including IDIDs and nozzle coking, restoring power to like-new condition in just one tank of fuel.



Dirty injector

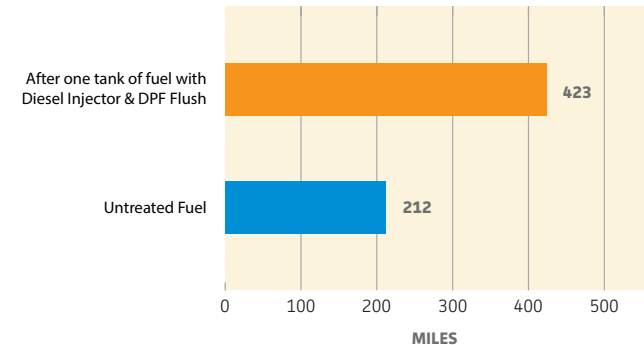


Injector after single treatment of Diesel Injector & DPF Flush

# Contains REGENEXTEND™ to Reduce the Frequency and Duration of Regens

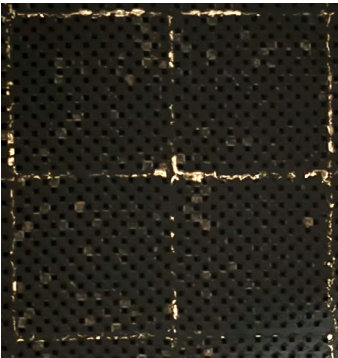
Diesel Injector & DPF Flush contains REGENEXTEND to not only reduce how often your DPF needs to regen, it also reduces the duration of each regen. This extends the life of your DPF, improves efficiency, reduces engine downtime, and eliminates the need for costly repairs.

## DISTANCE BETWEEN REGENS USING REGENEXTEND TECHNOLOGY

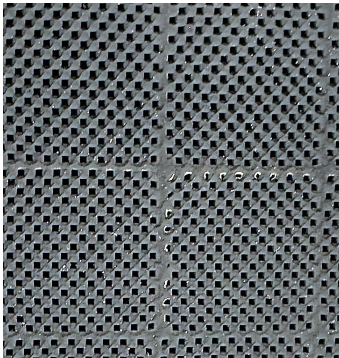


# Cleans DPF and Prevents Premature Clogging

Diesel Injector & DPF Flush reduces NOx and black smoke by up to 50%. That is good for more than just the environment. Lower emissions reduce stress on the exhaust system by reducing soot buildup on the DPF and EGR, reducing maintenance cost and downtime.



Dirty DPF before treatment



DPF after single treatment with Diesel Injector & DPF Flush

## TYPICAL PHYSICAL PROPERTIES OF DIESEL INJECTOR & DPF FLUSH

Color	Customer Convenience Formula (1:500)	Brown
Density at 60°F. (lbs/gal)	Customer Convenience Formula (1:500)	0.90-0.92
Sulfur Content		<15 parts per million (ppm)
Flash Point		110°F-149°F

This diesel fuel additive complies with the federal low sulfur content requirements for use in diesel motor vehicles and nonroad engines.

## DIRECTIONS FOR USE

Add **Diesel Injector & DPF Flush** as directed on the container label on a monthly basis, or as needed. To maintain a clean injection system and for complete diesel performance improvement, use Power Service Diesel Kleen® +Cetane Boost® every time you fill up to clean injectors, boost cetane and lubricate fuel injection components.

PART #	PACK	TREATS
3212-09	9/1 12-Ounce	Up to 40 Gallons
3226-12	12/1 26-Ounce	Up to 100 Gallons
3264-06	6/1 64-Ounce	Up to 250 Gallons

## EMISSIONS IMPROVEMENT AFTER SINGLE USE

